

CORNER INVESTIGATION REPORT

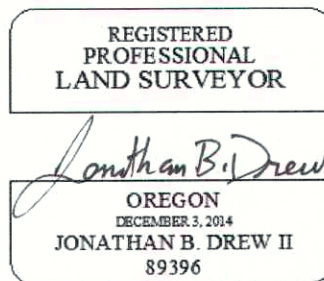
FS INDEX ID: V-3

CORNER: 1/4 GCDB ID: 140200 DATE: 5/3/2018
TOWNSHIP: 3S STATE: OREGON
RANGE: 7W COUNTY: TILLAMOOK
SECTION: 30 & 31 FOREST: SIUSLAW
MERIDIAN: WILLAMETTE DISTRICT: HEBO
NFSL PROPERTY BOUNDARY CORNER?: YES NO
LINE(S) POSTED: WEST - 1985 EAST - 2018
MAINTAINED: WEST - 2017
GUARD POST(S): WEST - 4.5 FT EAST - 3 FT
CORNER HISTORY:

HISTORY OF VISITATIONS:

- (1)1894 - F. SHARP, GLO SURVEY
- (2)1984 - F. TUERS, BLM RESURVEY, RW6/268 & F40-354
- (3)1985 - L. BISHOP, CSF# B-1194
- (4)2012 - T. JONES, CSF# B-3531

- (1) ESTABLISHED CORNER, SET 10"x10"x8" BASALT STONE, MARKED 1 BT AND RAISED A MOUND OF STONE ALONGSIDE CORNER.
- (2) FOUND 2 MOUND OF STONES, "BY PERSON(S) UNKNOWN", REESTABLISHED CORNER BY PROPORTION, SET IRON PIPE/BRASS CAP & 2 BT'S
- (3) FOUND IRON PIPE/BRASS CAP & 2 BT'S, SET ALUMINUM PIPE/CAP FOR RM.
- (4) FOUND IRON PIPE/BRASS CAP, RM & 2 BT'S.



MONUMENT FOUND/SET:

FOUND A 2-1/2" GALVANIZED IRON PIPE WITH A 3-1/4" BRASS CAP, FLUSH WITH A MOUND OF STONE 1.5 FT BASE & 1 FT HIGH.

RECORD CORNER ACCESSORIES:

- NO TRACE FOUND OF A (1)15" ALDER
- NO TRACE FOUND OF (1)MOUND OF STONE(1.5' HIGH & 2' BASE)
- FOUND SCATTERED MOUND OF STONE, NOT TIED.
- FOUND COLAR OF STONE, HOLLOW CENTER, NOT TIED.
- A 16" ALDER BEARS, S29°E - 25.2 FT, WITH BARK SCRIBE FRAGMENTS VISIBLE.
- A 41" FIR BEARS, N70°45'E - 71.9 FT, WITH A HEALED DOUBLE BLAZE.
- A 2-1/2" ALUMINUM PIPE WITH A 3-1/4" ALUMINUM CAP FOR RM BEARS, S50°25'W - 53.63 FT, CAP UP 5" ABOVE A MOUND OF STONE, MARKED AS DESCRIBED IN (3).

RECORD MEASUREMENTS:

- (1)N89°30'W - 22.44 FT
- (1)ALONGSIDE CORNER STONE
- (2)S11°26'E - 64.68 FT
- (2)S9°30'W - 65.21 FT
- (2)S29°E - 24.75 FT, (3)24.7 FT
- (2)N71°15'E - 71.94 FT, (3)6.6 FT
- (3)S50°23'W - 53.65 FT,
- (4)S50°21'18"W - 53.69 FT

NEW CORNER ACCESSORIES:

NO NEW ACCESSORIES ESTABLISHED

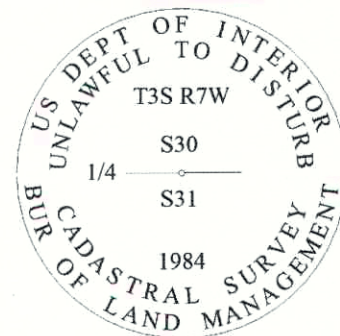
METHOD OF MEASUREMENT:

TRIMBLE S7 TOTAL STATION, SEE RECORD OF SURVEY FOR BASIS OF BEARINGS AND OTHER INFO. BT DISTANCES TO ALUMINUM NAIL SET SIDE CENTER, BEARINGS TO CENTER.

CORNER MAINTENANCE/OTHER INFO:

CLEAR BRUSH FROM AROUND MONUMENT & TO BT'S, BT FACES & A 6" BAND AT HEAD HEIGHT PAINTED RED. ADD NEW NAILS TO BT TAGS & ADD NEW TAGS WHERE NEEDED. MONUMENT SIZES ARE OUTSIDE DIAMETER & BT DIAMETERS ARE AT BREAST HEIGHT.

CAP DIAGRAM:



NFSL LINES BEAR: S88°44'W - 2640.33 FT & (3)N88°39'54"E - 2620.31 FT

GEODETIC COORDINATES:

LATITUDE: N 45° 16' 25.638'
 LONGITUDE: W 123° 35' 47.432"
 ELLIPSOID HEIGHT: ~1640 FT
 DATUM: WGS 84

DOCUMENTS ON FILE AT:

WILLAMETTE NATIONAL FOREST
 3106 PIERCE PARKWAY, STE D
 SPRINGFIELD, OREGON 97477

SOURCE: CONSUMER GRADE GPS, FOR NAVIGATION TO CORNER

DATE OF INVESTIGATION: 1/31/2018

REPORT BY: JONATHAN B. DREW II, PLS#89396, CFedS# 1664

FIELD CREW: JONATHAN B. DREW II, PLS#89396, CFedS# 1664
 TIMOTHY KRAUSE, USFS SURVEY TECH
 ZACH WILLIAMS, USFS FORESTY TECH
 MATT ZEPPEIRI, USFS FORESTY TECH

THIS DOCUMENT FILED IN CS OFFICE: YES
OTHER DOCUMENT FILED WITH CS: RECORD OF SURVEY

